

DPU

Dr. D. Y. PATIL VIDYAPEETH, PUNE

(Deemed to be University)

(Accredited (3rd Cycle) by NAAC with a CGPA of 3.64 on four point scale at 'A++' Grade)
41st rank in University Category, 3rd rank in Dental Category and 17th rank in Medical Category in India (NIRF-2022)
(Declared as Category - I University by UGC Under Graded Autonomy Regulations, 2018)
(An ISO 9001:2015, ISO 14001:2015 Certified University)



Dr. D. Y. Patil Medical College, Hospital & Research Centre

Pimpri, Pune – 411 018

❁ **STUDENT'S HANDBOOK** ❁

Academic Year 2022-2023

DPU

Dr. D.Y. Patil Vidyapeeth, Pune

(Deemed to be University)

Dr. D. Y. Patil Medical College, Hospital & Research Centre
Pimpri, Pune-411018



वक्रतुंड महाकाय सूर्यकोटि समप्रभः ।
निर्विघ्नं कुरुमेदेव सर्वकार्येषु सर्वदा ॥

INDEX

Sr. No	Detail	Page No.
1	Certificate of Accreditation	2
2	Chancellor's Message	3
3	Pro Chancellor's Message	4
4	Vice Chancellor's Message	5
5	Principal Director & CEO's Message	6
6	Director Academic's Message	7
7	Dean's Message	8
8	Our Esteemed Guests (feedback)	9-12
9	About Vidyapeeth	13-14
10	Information about College, Campus, Facilities, Hostel, Hospital, Medical Services, Hi-Tech Hospital & Infrastructure	15-20
12	Activities of Student's Council (Synapse)	21
11	Admission Procedure, Discipline & Conduct of the Students	22-26
12	Graduate Attributes	27
13	MBBS Programme Outcomes	28
14	ERP and Biometric System for Students	29
15	Proposed Academic Calendar & Block Training Programme	30
16	Mentorship Programme	31
17	Administrative and Academic Heads	32
18	Holiday List	32
19	NMC Notice	33-34
20	Undertaking for Observing Code of Conduct	35



राष्ट्रीय मूल्यांकन एवं प्रत्यायन परिषद
विश्वविद्यालय अनुदान आयोग का स्वायत्त संस्थान
NATIONAL ASSESSMENT AND ACCREDITATION COUNCIL
An Autonomous Institution of the University Grants Commission

Certificate of Accreditation

*The Executive Committee of the
National Assessment and Accreditation Council
is pleased to declare the
Dr. D. Y. Patil Vidyapeeth
(Deemed to be University u/s 3 of the UGC Act, 1956)
Sant Tukaram Nagar, Pimpri, Dist. Pune, Maharashtra as
Accredited
with CGPA of 3.64 on four point scale
at A⁺⁺ grade
valid up to February 07, 2029*

Date : February 08, 2022



*S. C. Sharma
Director*



EC(SC)/92/3rd Cycle/MHUNGNI0146

Chancellor's Message

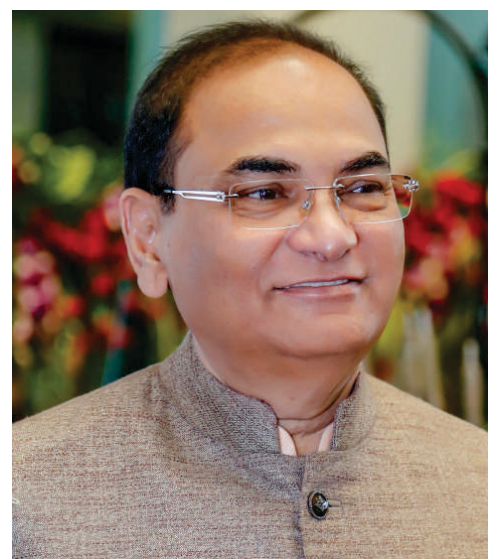
Dear Students,

Welcome to Dr. D. Y. Patil Medical College, Hospital & Research Centre, Pune. The Medical College, Hospital and Research Centre, Pimpri, Pune, is considered as one of the prestigious teaching and research institutions in the country, recognized by the erstwhile MCI / NMC of India. Vidyapeeth is **Accredited** (3rd Cycle) by **NAAC** with a **CGPA** of **3.64** on a four point scale at '**A++**' **Grade**. At national level NIRF-2022 ranking, DPU is placed at the 41st rank in universities, 3rd rank in Dental Category and 17th rank in Medical Category. All our hospitals viz Medical, Dental, Ayurved and Homeopathy are NABH accredited and laboratories are NABL accredited.

The erstwhile MCI / NMC has recognized an intake of 250 for the MBBS course, 220 seats for the post graduate medical degree course (MD and MS) in as many as 20 subjects. Besides that, there are 12 super specialty courses. The annual intake for these courses is 30. The MBBS degree of the Vidyapeeth has been recognized by National Medical Commission (NMC), New Delhi and Ministry of Health and Family Welfare, Government of India.

We believe that the strength of an Institute lies in its team. We have a team of highly qualified and experienced faculty, ably supported by an equally dedicated staff. The institute also organizes Conferences, Workshops with International Faculty, Teleconferencing with top Universities worldwide. Students have been selected to present scientific papers at the top International and National level conferences. Dr. D. Y. Patil College, Hospital & Research Centre, Pune has garnered many awards and recognitions. Besides the academic activities, the Outreach Program of the Hospital organizes medical camps in rural areas to serve the poor and weaker sections of the society. Besides academic pursuits, our Medical College offers a wide range of social, cultural and recreational activities and I hope you will take time from your studies to enjoy some of those benefits.

The Hospital has 61 wards with 2011 beds dedicated to different specialities. These wards are in proportion to the number of U.G., P.G. and Super speciality students pursuing M.B.B.S., M.D., M.S., M.Ch. and D.M. The Hospital is equipped with 32 state-of-the-art modular operation theatres (Maquet and Dragger) with advanced technology, 150 bedded Intensive Care Unit with modern monitoring machines, 4th generation Da Vinci xi Robot for Robotic Surgery and Twin Cath Labs with an EP laboratory, 64 private rooms and a clinical laboratory with latest analyzers. The Department of Radio-diagnosis has 2 MRI Scanners and 2 CT Scan machines. The Digital X-ray machines, Digital Mammography Machine, Colour Doppler, Sonography machines and a D.S.A. are available 24 x 7. The CSSD and Endoscopy services are also in place.



Dr. P. D. Patil
Chancellor

I wish you every success and hope that you will see this Institute as a place for your development into an empathic, compassionate and knowledgeable medical care provider.

Wishing everyone the very best...

Pro Chancellor's Message

Dear Students,

It is my privilege to share my views through this Handbook, the best media to connect the YOUNG minds of the Nation .The future, as aptly said by Robert Hutchins “The objective of education is to prepare the YOUNG to educate themselves throughout their lives”.

Dr. D. Y. Patil Vidyapeeth, Pune is NAAC accredited with 3.64 CGPA accredited Deemed to be University. It is ISO 9001: 2015 and 14001: 2015 certified University. The National Institutional Ranking Framework (NIRF 2022) ranking of Dr. D. Y. Patil Medical College, Hospital and Research Centre, Pune is within 17th position in all over India in the Medical Institutions category for last three consecutive years.

The cradle of this college started in 1996 and here we are today with magnanimous 2011 bedded hospital with the state-of-the-art infrastructure and latest technologies like 4th generation Da Vinci xi Robot for Robotic Surgery, Twin Cath Lab, 128 Slice CT Scan machine, Asia's first 3 Tesla MRI with artificial intelligence and functional MRI VIDA system, which not only gives all of you budding doctors hands on work experience, but dynamic scope to learn and grow. Our University Hospital stood First among 653 private hospitals in the Country in “Swachh Bharat Initiative - Kayakalp” by Ministry of Health and Family Welfare, Government of India in October 2019. The College scored 100/100 in the large-scale hospital category.

Dr. D. Y. Patil Medical College, Hospital and Research Centre, Pune is conferred with National Award in Green Hospital Category by Association of Health Care Providers, New Delhi in February 2020. This national status is possible because of academic excellence, reputed trained medical faculty, brand reputation in medical profession and world class infrastructure.

I feel proud in sharing that this exceptional institution, founded by Dr. D.Y. Patil in the year 1983 and thereafter with his blessings, our Chancellor Dr. P. D. Patil constantly worked for 24x7 with a great vision, dedication, determination and developed 32 colleges from K.G. to P.G. Nearly, 26000 students are studying every year. The Hi-Tech hospital has procured 175 Intensive Care beds, 32 Operating Theaters with advanced technology, specialized outpatient consultation suites, multi organ transplant facilities like Kidney & Liver. Till date, we performed more than 143 successful Kidney & 41 Liver transplants. The facilities for Angiography, Angioplasty, Cardiovascular Surgery, etc. have been incorporated.

We have “Yashoda” Milk Bank to promote breast feeding practices and to provide safe donor human milk for needy and sick newborn. We have got more than 11567 donor mothers and we feel proud to say that we have provided breast milk to more than 16814 newborns. Our collection of milk is approx. 2400 liters. The hospital also has state-of-the-art IVF and endoscopy center that provides exceptional personalized reproductive and fertility health care to the patients.

Keeping the Mission of Academic Excellence, DPU - Dr. D. Y. Patil Vidyapeeth, Pune, is always continuing its date with inexorable development activities in all the fronts, in a bid to create a world class University. This is reflected by the consistent expansion of Infrastructure, Faculty Research Contributions & National International Linkages & Collaborative Initiatives,



Dr. (Mrs.) Bhagyashree P. Patil
Pro Chancellor

signaling out globally that DPU is focused with its thrust area in Research & Scientific Development Activities.

Visualizing to see an enlightened, cultured and economically vibrant INDIA, developed through education in diverse disciplines ,we at DPU keep up the commitment to contribute towards the growth of our Nation ,the purpose of our Vidyapeeth and also our dream to make DPU global hub for Academic Excellence in the field of higher education.

Vice Chancellor's Message

Dear Students,

It gives me immense pleasure in introducing to you one of the premier institutions in the field of health sciences in the country. I believe the success of the University lies in the perfect combination of having dedicated and knowledgeable faculty, state-of-the-art infrastructure and students having an urge to learn and create something new. Dr. D. Y. Patil Vidyapeeth (DPU), Pune has always been a combination of these three essential requirements, which is why it has touched the pinnacle in the field of education, particularly health sciences. All our hospitals viz Medical, Dental, Ayurved and Homeopathy are NABH accredited and laboratories are NABL accredited.

With the aim of providing the latest inputs in their respective fields and ensuring the students to be at par with their international counterparts, regular interactions with internationally acclaimed guest faculty are organized. In this regard, a regular online program 'Clinical Global Health Education' in collaboration with Johns Hopkins University School of Medicine has been initiated and successfully implemented for over seven years in the Vidyapeeth.

In our Institute, we provide students with opportunities for involvement in the innovative research projects and life-enhancing community service. We believe that complete education is what makes a student self-educated. To ensure this, greater emphasis is given on problem-solving capabilities of students.

Both, Medical and Dental Colleges under the aegis of Dr. D. Y. Patil Vidyapeeth, Pune has world-class infrastructure, virtual classrooms, highly qualified and dedicated faculty, adequate co-curricular facilities, spacious museums, laboratories and libraries with sufficient number of books and journals. The college has the right blend of ambience to promote the highest level of academic and personality development of each student.

Dr. D. Y. Patil Vidyapeeth, Pune is Accredited by the National Assessment and Accreditation Council with a CGPA of 3.64 on a four point scale at 'A++' grade, and providing high-quality education ensuring the pursuit of knowledge and the creation of new ideas. At national level NIRF-2022 ranking, DPU is placed at the 41st rank in universities, 3rd rank in Dental Category and 17th rank in Medical Category and also UGC has accorded Category - I University Status. What we have achieved so far is definitely commendable. However, I believe that there is still scope for us to become better and to reach higher levels of academic excellence. I have no doubt that we will be able to achieve these objectives with cooperation from our faculty from various institutions, which include experienced, knowledgeable and caring mentors.

I wish you good luck for a successful performance at the NEET-UG-2022. Lastly, I congratulate you for having chosen this college to pursue and achieve your future dreams and professional objectives in the area of health sciences.

Welcome on behalf of the entire Vidyapeeth fraternity.



Dr. N. J. Pawar
Vice Chancellor

Principal Director & CEO's Message

Dear Students,

Dr. D. Y. Patil Medical College, Hospital & Research Centre, Pimpri, Pune has been providing professional medical education in the country of the highest quality and has been consistently ranked among the top medical institutions by various agencies like NAAC, NIRF, NABH, NABL etc.

Our endeavor has always been to provide the best of knowledge and skills to the student and prepare them to take up the challenges of tomorrow. The dedicated and skilled faculty, excellent Infrastructure, Library facilities, Museums, Laboratories and Skill labs, provide hands-on experience to the young minds. The campus provides excellent opportunity to interact with students of the other professional disciplines and gain knowledge about different culture, thus facilitating their overall development. The hospital has state-of-the-art facilities to provide the students with opportunities to acquire optimum bedside manners and clinical skills.

True to our mission, we are dedicated to training competent, compassionate and caring physicians through excellence in teaching, patient care and medical research.



Dr. Amarjit Singh
Principal Director & CEO

Director Academic's Message

Dear Students,

I extend a very warm welcome to you all and congratulate you for your wise decision of joining Dr. D. Y. Patil Medical College, Hospital and Research Centre, Pune for your further studies. I am sure that it will prove to be intense, challenging and rewarding learning experience for your professional and personal growth. The student handbook is intended to provide a brief, concise and understandable overview of some of the most important opportunities and expectations that anchor on progress.

Our goal is to provide the best academic education and high-quality medical education training to our students so as to prepare them to take up challenges.

Our institute has already implemented competency-based education system as per guidelines of erstwhile Medical Council of India (MCI) / National Medical Commission (NMC).

First year students, during the next few months will be transitioning, into this new journey socially, intellectually, emotionally, spiritually and psychologically.

Be assured that with dedicated and skilled faculty and excellent State-of-the-Art infrastructure, I encourage all our students to take full advantage of the facilities available and perform to their full potential. We ensure that our college remains a safe and healthy place for students to study comfortably. The emphasis is on all round development of our students moving ahead with quest for improvement.

I wish you all good luck and success in your Career.



Dr. P. Vatsalawamy
Director Academics

Dean's Message

Dear Students,

Since its inception in 1996, Dr. D. Y. Patil Medical College, Hospital and Research Centre, Pimpri, Pune, has been in the forefront of providing professional medical education in the country.

It is one of the best teaching and research institutions in the country, recognized by the National Medical Commission (NMC), Government of India, Ministry of Health & Family Welfare. It is one of the jewels in the crown that glitters among other prestigious Institutions of our Vidyapeeth.

The National Medical Commission of India has permitted the College to run MBBS course, Post Graduate Degree Courses (MD/MS) in 20 subjects and Superspecialty Courses in M.Ch. Neurosurgery, M.Ch. Urology, M.Ch. Cardio Vascular & Thoracic Surgery, M.Ch. Plastic & Reconstructive Surgery, M.Ch. Surgical Oncology, M.Ch. Paediatric Surgery, D.M. Nephrology, D.M. Cardiology, D.M. Neurology, D.M. Interventional Radiology, D.M. Critical Care Medicine, D.M. Medical Gastroenterology. The annual intake for these courses is 30. Besides, there are fellowship programs, Ph.D program, M.Sc. programs, MPH program, Certificate courses offered in a few subjects.

Our excellent infrastructure includes museums, spacious lecture halls, a well stocked state of the art library, auditorium, laboratories, CT scan, MRI, Colour Doppler, Dialysis units besides the usual Operation Theaters, ICUs, and a very well-equipped Laboratory. Facilities exist for specialized investigations like Digital Mammography, various Endoscopies, Blood Gas Analysis and a host of other sophisticated tests. Specialized investigations like blood gas analysis, U.V. visual spectrophotometric analysis, etc. are carried out in the hospital attached to the college.

The sprawling 5000 sq. mt. Central Library boasts of the latest Journals and Periodicals, Internet Facilities and an air- conditioned environment conducive to learning. Modern teaching aids like Close Circuit T.V., LCD Projectors, Smart boards, Tele Conferencing and Video Conferencing are available. The college has a research centre that is recognized by the Government of Maharashtra under Mahatma Jyotiba Phule Jan Arogya Yojana Scheme.

The strength of the college lies in its dedicated and skilled faculty and staff. The students who have graduated from this institution have been successfully practising medicine in different states of the country as well as abroad. The college has won many accolades.

The College holds regular workshops, Guest Lectures by International faculty, teleconferencing with top Universities worldwide. Students have presented scientific papers at the national level and have won accolades for their performance. At Dr. D. Y. Patil Medical College, Hospital and Research Centre, Pune, it has been our constant endeavour to train competent, compassionate and caring physicians through excellence in teaching, patient care and medical research.

Wishing you success in your professional career....



Dr. J. S. Bhawalkar
Dean

OUR ESTEEMED GUESTS (Feedback)



*“Impressed and mesmerized by the facilities created.
Let there be more institutions like DPU with fond and
everlasting memories.”*

Dr. K Ramnarayan
(Pro-Chancellor)
Sikkim Manipal University

Date of Visit : 05/09/2022



“Really very well thought given to each and every thing library, college faculties. Everyone is so particular and master in their tasks and this is the best University of the world where knowledge and facilities are the best. Thank You.”

Dr. Banarsilal Sahu
Brahmakuman's Mount Abu

Date of Visit : 16/09/2022



“This was a very impressive visit. The whole group of delegates was delighted to see the attention to detail and thought put into excellent provision. Our enormous thanks to colleagues at Dr. D.Y. Patil for such a great visit.”

Prof. Claire Hamshire,
Manchester Metropolitan University, UK

Date of Visit : 10/10/2022



“I have seen many libraries in the world. This is the best ever both in the digital and physical space. This is entirely due to the grand vision of legendary Dr. P. D. Patil. It was a privilege to visit this world class library.”

Dr. Raghunath Mashelkar,
Ex DG,
Council of Scientific & Industrial Research

Date of Visit : 25/11/2022

Dr. D. Y. Patil Vidyapeeth, Pune

Dr. D. Y. Patil Vidyapeeth, Pune was established in 2003. It is situated in Pimpri, in the city of Pune.

The city is steeped in cultural, educational and political history. Pune was the cultural capital of the Marathas and rightly it has earned the sobriquet as the 'Queen of the Deccan'. It is situated at the height of 575 meters above the sea level, on the Deccan plateau in the Sahyadri ranges. The city is surrounded by verdant hills and the pristine lakes. Due to the picturesque setting of the city coupled with its salubrious climate, it has become a home for many after their retirement. That is why the city is also known as the 'Pensioner's Paradise.'

The city has a rich legacy in education. It is called the "Oxford of the East," as it has the highest number of Colleges and Universities compared to any other city in India. About 25,000 foreign students from over 99 countries are pursuing their education in Pune.

It has a large number of reputed educational and research institutes, such as Savitribai Phule Pune University, Pune, Deccan College, College of Military Engineering (CME), Armed Forces Medical College (AFMC), Bhandarkar Oriental Research Institute, National Chemical Laboratory (NCL), National Defence Academy (NDA) National Center for Cell science (NCCS), National Institute of Virology (NIV), National AIDS Research Institute (NARI) and Information Technology park at Hinjewadi, etc.

Dr. D. Y. Patil Vidyapeeth, Pune is located at a distance of 13 km. from the Pune Railway Station and the Airport. The city is well connected to Mumbai and the entire country through rail, air and by roads. The city also has an International airport.



Dagdusheth Ganpati

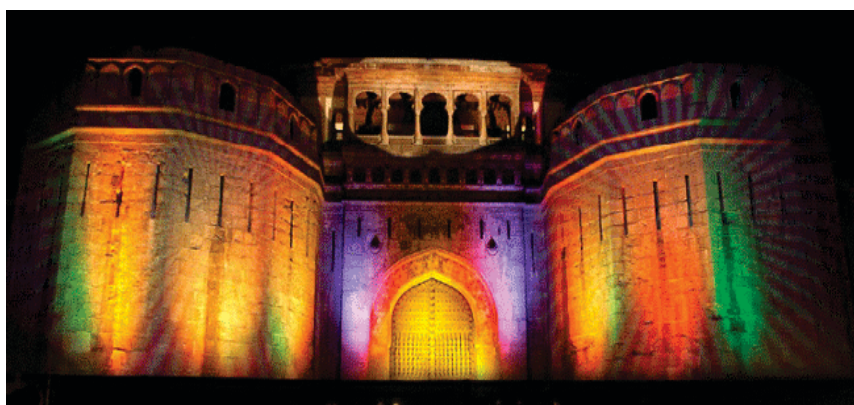


NCL



IISER

Salient Features		
Altitude	575 m	
Area	816 sq. km.	
Population	10.46 Million (approx)	
Language	Marathi, English, Hindi	
Climate	Max. Temp (C)	Min. Temp (C)
Summer	40	20
Winter	25	8
Rain	Moderate 75 cm. p.a.	



Shaniwarwada



NARI

Vision

To help build an enlightened, culturally and economically vibrant India, developed through education in diverse disciplines.

Mission

To contribute to the socio-economic and ethical development of the nation, by providing high quality education through institutions that have dedicated faculty and state-of-the-art infrastructure, and are capable of developing competent professionals and liberal-minded citizens.

Vision 2025

To develop a knowledge centre which will be recognised for its academic pursue not only in India but also globally.

Objectives

The principal objectives of the Vidyapeeth are to :

- Establish institutions for learning and research.
- Raise academic standards in the constituent units of the Vidyapeeth.
- Develop evaluation methods that raise students objectives.
- Bring about capacity development of teachers.
- Encourage both teachers and students to undertake research.
- Enter into collaboration with higher educational institutions.
- Undertake extension activities for the development of the community.
- Develop and enter into collaborative programmes with Indian and foreign Universities and other academic institutions, scientific organizations and other agencies.
- Carry out instructions and training, distinguishable from programmes of ordinary nature, for making distinctive contributions in the areas of specializations.
- Provide for special training or coaching for competitive examinations, for recruitment to the Public Services, Public Undertakings and other competitive employment opportunities
- Develop students personalities as informed and objective critics, identify and cultivate their talents, train right kind of leadership, develop right kind of attitudes, interests and values.

Establishment

Dr. D. Y. Patil Vidyapeeth, Pune was granted Deemed-to-be University status under section 3 of the University Grants Commission Act 1956 by the Government of India, Ministry of Human Resource Development, vide their Notification No. F.9- 39/2001 - U.3 dated 11/01/2003 on the recommendation of the University Grants Commission, New Delhi.

This status was accorded in recognition of high quality of education imparted through the state-of-the-art infrastructure and dedicated faculty of the medical college and ascertaining the potential of the institute for excellence.

Memberships : National and International

- Association of Indian Universities (AIU), New Delhi.
- Association of Commonwealth Universities (ACU), UK.
- International Association of University Presidents (IAUP), US.
- All India Management Association (AIMA), New Delhi
- Institutional Membership of the Current Science Association, Bangalore

Recognitions

- Accredited by National Assessment and Accreditation Council (NAAC) with a CGPA of 3.64 on a four point scale at "A++" Grade.
- NIRF 2022 ranking by MHRD - 41st rank in University Category, 3rd rank in Dental Category and 17th rank in Medical Category in India.
- Declared as Category - I University by UGC Under Graded Autonomy Regulations, 2018
- Included in the list of Institutions Deemed to be Universities under section 12B of the UGC Act, 1956 by UGC.
- Swachh Campus Ranking 2019 by MHRD - achieved 9th rank amongst Cleanest Higher Educational Institutions in the Country.
- Registered with Foreign Contribution (Regulation) Act (FCRA) in 2013 & re-registered in 2018.
- Biotechnology and Bioinformatic Institute recognized as DST-FIST (Level-I).
- Vidyapeeth has also obtained An ISO 9001:2015 and 14001:2015 Certified University
- National Medical Commission (NMC), New Delhi and Ministry of Health and Family Welfare, Government of India.
- Dental Council of India (DCI), New Delhi and Ministry of Health and Family Welfare, Government of India.
- Ministry of Science & Technology, Department of Scientific and Industrial Research (DSIR), New Delhi recognized as Scientific and Industrial Research Organization (SIRO).
- Ethics Committee is re-registered by Drug Controller General of India (DCGI)
- Medical College selected as a part of The Mahatma Jyotiba Phule Jan Arogya Yojana of Government of Maharashtra.
- DPU Unit of UNESCO Chair in Bioethics, Haifa was established in May 2015.

Constituent Colleges and Institutes :

- Dr. D. Y. Patil Medical College, Hospital and Research Centre, Pimpri, Pune.
- Dr. D. Y. Patil Dental College and Hospital, Pimpri, Pune.
- Dr. D. Y. Patil Biotechnology and Bioinformatics Institute, Tathawade, Pune.
- Dr. D. Y. Patil College of Ayurved and Research Centre, Pimpri, Pune.
- Dr. D. Y. Patil Homoeopathic Medical College and Research Centre, Pimpri, Pune.
- Dr. D. Y. Patil College of Physiotherapy, Pimpri, Pune.
- Global Business School and Research Centre, Tathawade, Pune.
- Dr. D. Y. Patil College of Nursing, Pimpri, Pune.
- Dr. D. Y. Patil Institute of Optometry and Visual Sciences, Pimpri, Pune.
- Dr. D. Y. Patil Vidyapeeth's Centre for Online Learning (COL), Pimpri, Pune.
- Dr. D. Y. Patil School of Design, Tathawade, Pune
- Dr. D. Y. Patil School of Liberal Arts, Pimpri, Pune

Dr. D. Y. Patil Medical College, Hospital and Research Centre



Medical College



Medical College



Vidyapeeth Campus



Lecture Hall

Dr. D. Y. Patil Medical College, Hospital and Research Centre was established in 1996. It received recognition from the Medical Council of India (MCI), and MBBS degree could be awarded from the first batch itself. The Medical College, Hospital & Research Centre, has been accorded the status of University under section 3 of the UGC Act, 1956, vide Notification No. F. 9-39/2001-U.3 dated 11th Jan. 2003 of the Government of India.

In 2003, the college was given permission to conduct postgraduate courses in certain subjects. In June 2005, the College was allowed an intake of 71 students in post graduate degree and diploma courses. Presently, there is an intake of 250 students for MBBS and 220 for PG degree and 30 for superspecialty courses. Students can pursue MD/MS studies in the following 20 subjects: General Surgery, Obstetrics & Gynecology, Orthopedics, Ophthalmology, Otorhinolaryngology (ENT), General Medicine, Paediatrics, Anaesthesiology, Psychiatry, Radiodiagnosis, Respiratory Medicine, Dermatology, Venerology and Leprosy, Pathology, Community Medicine, Pharmacology, Microbiology, Anatomy, Physiology, Biochemistry and Emergency Medicine. The College also conducts super-specialty courses in Neurosurgery, Urology, Nephrology, Cardio Vascular & Thoracic Surgery (CVTS), Cardiology, Neurology & Plastic Surgery and Interventional Radiology. The annual intake is 30 seats per year. Students can also pursue Ph.D. Program in all the subjects.

Dr. D. Y. Patil Medical College, Hospital and Research Centre have received recognitions and expansions. It has been granted by the NMC, UGC, MHRD and by the Ministry of Health & Family Welfare, Government of India. The Institute boasts of excellent

facilities like spacious buildings, large lecture halls, well-equipped laboratories, well-stocked library, and super specialty facilities in the Hospital like MRI, whole body CT Scan, ICUs with ventilators etc.

Besides regular lectures and practicals, the College gives importance to research. Several research proposals of post-graduate students and of the faculty members have been approved and funded by Indian Council of Medical Research (ICMR), DST, Dr. D. Y. Patil Vidyapeeth, Pune and so on.

The College Campus

Dr. D. Y. Patil Vidyapeeth, Pune Administrative Building and Dr. D. Y. Patil Medical College, Hospital and Research Centre are located in the same sprawling campus at Pimpri. The College building is aesthetically designed and there is juxtaposition of space and light. There is a mural of Lord Dhanvantari on its facade and the magnificent fiber glass dome that can be seen from miles around. The state-of-the-art facilities are in tune with the best in the world. The college has 35 departments.

Lecture Halls

The College has five well appointed lecture halls with around 300 seating capacity each. It has three examination halls with 250 seating capacity each. The desks are spaced out well and the halls are airy, well-lit and are equipped with fine acoustic system. Each hall also has the latest audiovisual teaching aids. While designing these lecture halls, every aspect pertaining to medical learning had been taken into account.

The Facilities



New Auditorium



Auditorium



Library - Reference Section



Library - Reading Hall



Rooms



Hostels

The Auditoriums

There are two State-of-the-Art Auditoriums with a capacity of 1000 and 250 each. They are spacious, centrally air-conditioned with ergonomically designed chairs and is fully equipped with latest audio-video facilities and is being extensively used for all kinds of seminars, symposia, lecture of guest speakers and student activities.

Library - E-Resource & Information Centre

The College has an excellent Central Library facility sprawling over 5000 sq. meters. There are separate reading rooms for the teaching staff and students. Infact, the spacious reading halls can accommodate over 750 students. The total collection of books in the library is more than 32,700. The Library subscribes to most of the National and International Journals required by the undergraduate and post-graduate students and it subscribes to 2047 online journals. In addition to the central library facility, each department has its own departmental library. The Reading Room is kept open from 7 a.m. to 12 p.m. for students so that they can use it according to their convenience. The cafeteria adjacent to the library is also open till 12 p.m. The Central Library has Wi-Fi internet facility, students and the faculty have open access to this facility. As the College and hostels are 'Wi-Fi' enabled, students can access information from any point anywhere.

Hostels

The College understands that students need congenial and comfortable place to stay in order to concentrate on their studies. It has set up secure hostels with modern amenities. The hostels have reading rooms, recreational areas with T.V. and indoor game facilities such as carom, table tennis, etc. The well-equipped gym in the premise is under the supervision of a physical trainer. All hostels are Wi-Fi enabled with high speed internet connectivity. There is a cafeteria attached to each hostel. Hostelites can avail the mess facility.

The Facilities



Central Library



Outside Reading Room



Pathology Museum



Community Medicine Museum

Parent - Teacher Organization

Parent Teacher Organisation is a unique feature of our college. On a regular basis, parents and teachers interact to ensure the well-being of their wards. This is another step towards helping the student adjust to a new environment.

The Faculty

The college has a team of highly qualified, dedicated and experienced faculty best in the region. They are involved in continuous, relevant and innovative research programs. The college faculty is invited as guest speakers at many well-known institutions in the country. Various universities all over India have invited senior members of the teaching staff as paper setters, examiners and moderators. The college encourages its faculty to attend workshops, seminars, conferences, symposia, etc., frequently. The quality of teaching is evident from the excellent results of the college.

Special Features

- Highly qualified and experienced staff according to the norms laid down by the Medical Council of India (MCI).
- Museums with a multitude of specimens for study and reference.
- Well-stocked departmental libraries with latest reference books and journals.
- OHP, LCD projectors, Slide projector, Computers and CD-ROMs.
- Well-planned laboratories with modern equipment.
- The College is Wi-Fi enabled with high-speed internet connectivity.
- Recreational facilities to beat the stress.



Anatomy Museum

The Hospital



Operation Theatre



Robotic OT



CCL



I.C.U.

The Hospital

Dr. D Y. Patil Medical College, Hospital & Research Centre, Pune provides ample and varied clinical material to the students, acquainting them to the different ailments, infirmities and diseases and its treatments. The Hospital has 2011 beds. It is equipped with all modern amenities and equipment best for students learning. It caters to all the specialties and is manned by highly qualified, successful and experienced faculty members. The Hospital has ultra modern laboratories and equipments like C.T. Scan, Colour Doppler, 3 Tesla MRI, Digital Mammography, Sonography, Endoscopy, Colposcopy. Lithotripsy Machine, 100 watt Holmium Laser Unit with C-Arm and Image Intensifier, anaesthetic machines, Bactec Systems, Real Time PCR and so on. 4th Generation DA VINCI Robot is available for surgical procedures in Urology and Gynaecology that are complex and critical.

Intensive Care Unit (I.C.U. - 175 beds)

- The ICUs have capacity for 15 beds for Medicine, 15 beds capacity for Surgery, 15 beds capacity for PICU and 20 beds capacity for Neonatal and other 85 ICU beds under the charge of highly qualified and experienced doctors.
- Ultramodern ventilators and multi parametric monitors with central monitoring system are available.
- The ICUs have trained and experienced staff and nurses.
- The ICU has fully equipped Central Laboratory.
- Also available Arterial Blood Gas Analyzer.
- Various test like Stress test, pulmonary functions tests, etc can be done here.

Medical Services At A Glance (Other supportive services)

- Well-equipped clinical departments
- Modern supportive diagnostic services
- Pediatrics and neonatology
- Emergency and trauma care
- 24 hour blood bank
- 24 hour casualty medical services
- 24 hour ambulance services
- Pharmacy
- Geriatric centre

Central Clinical Laboratory

The Pathology, Biochemistry, Microbiology Laboratories are equipped with Culture Automatic Cell Counter, Blood Gas Analyzer, Electrolytes Analyzer, Auto-Analyzer, Histopathology Diagnosis, Culture Sensitivity, Hormonal Assays etc. available 24×7 under supervision of experts.

Radiodiagnosis



3T Magnetom Vida MRI



Digital Mammography with Tomosynthesis



128 Slice CT Scan



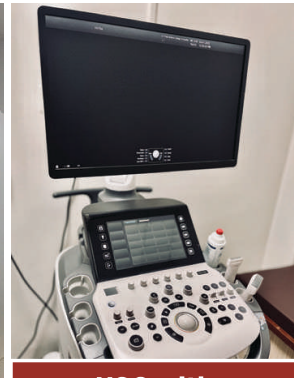
16 Slice CT Scan



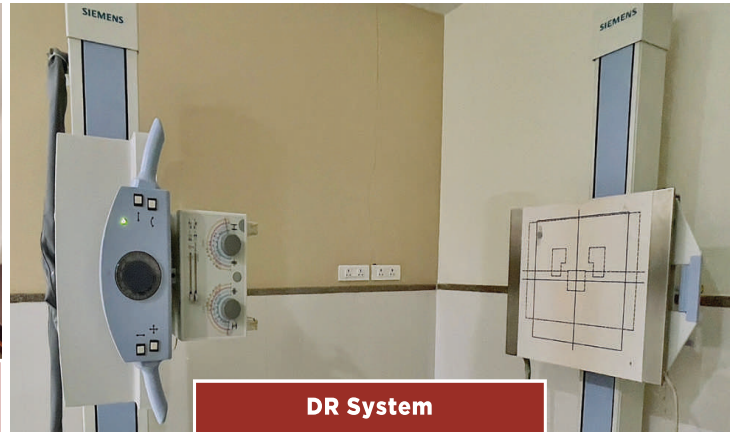
USG with Colour Doppler



1.5T MRI



USG with Colour Doppler



DR System

The Department of Radiodiagnosis and Imaging is considered as one of the best centers in Pune.

The Hospital is equipped with a state-of-the-art Radiodiagnosis Department. It has 2 CT Scan machines (128 slice and 16 slice), 2 MRI scanners (1.5T and 3Tesla), Digital X-ray unit, Digital Mammography, Colour Doppler, Ultrasonography machines and D.S.A. Besides that, there are Clinical Laboratory with latest analyzers, pharmacy, CSSD, Endoscopy services and Emergency Medicine Department that runs 24x7.

The machine uses Total Imaging Matrix (TIM) technology. The MRI is capable of imaging the whole body with applications for brain, spine, abdomen, heart, musculo-skeletal, breast etc. In addition to routine studies, advanced applications in neurology, orthopedics, whole body diffusion, non-contrast perfusion and

high resolution peripheral imaging are available. In case of non-cooperative and pediatric patients, it is possible to correct motion artifacts. The imaging of abdomen can also be done with the help of this machine. Interestingly, the patient need not hold his breath while the process is carried out.

Other advanced applications like colour mapping of tracts of brain, functional brain imaging, brain perfusion studies without contrast injection along with whole body diffusion imaging are possible on this equipment. The other available tools are three dimensional (3D) acquisitions with sub-millimeter resolution of body, high resolution breast imaging, early detection of degeneration of cartilage and spectroscopy. Angiographies of limbs are also possible. While doing so, the patient need not change his position. The process is comfortable to the patient. Moreover, it can be done in no time.

Highlights of the Hi-Tech Hospital



Entrance Lobby



Cath Lab



Operation Theaters



Operation Theaters



Registration



OPD

Dr. D. Y. Patil Medical College, Hospital and Research Centre, Pimpri, Pune is built in an area covering 76,896 sq. mt. It houses all the OPDs (basic and superspeciality), modular operation theatres, 175 ICU beds of various specialities, 60 private rooms and two Cathlabs with an EP laboratory.

'Yashoda' Advanced Human Milk Bank (YAHMB) and Comprehensive Lactation Management, Training and Research Centre is established at Dr. D. Y. Patil Medical College, Hospital and Research Centre for providing safe donar human milk for sick and needy newborns. The Hospital offers clinical services through indoor, outreach components and ambulatory services. The ambulatory services offered are connected to the different OPDs dedicated to different branches of Medicines & allied, Surgery and allied and various Superspeciality subjects.

All the operating OPDs are spacious and have adequate examination rooms for the use of the various departments. These rooms are equipped with latest diagnostic equipments of global standards and are upgraded from time to time. The Hospital has 61

wards with 2011 beds dedicated to different specialities. These wards are in proportion to the number of U.G., P.G. and Superspecialty students pursuing M.B.B.S., M.D., M.S., PG Diploma, M.Ch., D.M. & Ph.D. The Hospital is equipped with 32 operation theatres with latest equipments, ICUs with modern monitoring machines and a clinical laboratory with latest analyzers. The Department of Radio-diagnosis has 2 MRI and 2 CT Scan machines. The Digital X-ray machines, Digital Mammography Machine, Colour Doppler, Sonography machines and a D.S.A. are available for 24 x 7. The CSSD and Endoscopy services are also in place.

There is an Emergency Medicine Department, Pharmacy and an in house laundry and kitchen for patients. The hospital has 24 hours ambulance service, blood bank with component separation facility and a separate transplant space offering organ transplant services in renal and corneal area. In addition, the hospital also has an IVF centre, and therapeutic oncology services with (3D/4D Ultra Sonography, CASA, IUI, ICSI, IMSI, PGT-A/PGT-M).

SYNAPSE



Admission Procedure

Introduction

The admissions to MBBS programme shall be done on the basis of the merit list as ascertained from the performance of the candidates in National Eligibility cum Entrance Test 2022 conducted by National Testing Agency (NTA), Delhi and Central Counseling will be done by **DGHS** New Delhi. (MCC)

NEET-UG is an eligibility-cum-ranking examination prescribed as the single entrance examination to various MBBS Programme as per Section 14 of the National Medical Council ACT, 2019. No other entrance examination, either at state or institution level, shall be valid for entry to MBBS Programme.

National Testing Agency(NTA) has been notified by the Ministry of Health and Family Welfare, Government of India to conduct **NEET-UG 2022** on an All-India basis.

Eligibility

- Indian Nationals, Non Resident Indians (NRI's), Overseas Citizen of Indian (OCI's), Persons of Indian Origin (PIO's) & Foreign Nationals are eligible for appearing in the National Eligibility Cum Entrance Test (UG), 2022
- The Birth Certificate indicating name of the candidate, Secondary School Certificate i.e. SSC or equivalent examination certificate or School Leaving Certificate endorsing the date of birth will constitute a valid proof.
- The candidate must have passed the qualifying examination i.e. Higher Secondary Certificate (HSC/12th Standard) or equivalent examination with English, Physics, Chemistry and Biology (Botany & Zoology).
- A candidate belonging to Open Category must have obtained not less than 50% (i.e. 150 out of 300) marks in Physics, Chemistry and Biology taken together at the HSC (or equivalent) Examination. A candidate belonging to constitutional reservation and constitutional reservation with Person with disability claim must have obtained not less than 40% (i.e. 120 out of 300) marks in Physics, Chemistry and Biology taken together at the HSC (or equivalent) Examination. Person with disability candidate in General category must secure not less than 45% marks (i.e. 135 out of 300) in Physics, Chemistry & Biology (PCB) taken together at the HSC (or equivalent) Examination.
- NEET eligible candidate on the basis of All India Rank and Percentile of Marks obtained in the NEET (UG-2022)

Programmes-wise Intake Capacity and Distribution of Seats

Programmes	Total	General Category	NRI/ Institutional
MBBS	250	212	38

NRI/PIO/FN Category

NRI - Non Resident Indian; **PIO** - Person of Indian Origin;

FN - Foreign National

An NRI is a person who is 'not a resident' or who is 'not ordinarily resident'. A person is treated as 'not ordinarily resident' (i) If he / she has been resident in India for less than 182 days in the year preceding the date of application; or (ii) If he / she has been in India for less than 365 days during the four years immediately preceding the date of application.

A PIO is a person having foreign citizenship (except Pakistan and Bangladesh) within NRI status, but who holds a foreign passport at the time of application or at the time of consideration of admission and during the period of his / her study and whose one / both parents or anyone / both grand parent(s) is / are (or was / were), citizen(s), of India by virtue of the provisions of the Constitution of India or Section 2(b) of the Citizenship Act 1955 (Act. No. 57 of 1955).

An FN is a person having citizenship of a foreign country (any country other than India) and not having the status 'NRI' and / or 'PIO'

Fee Structure:

- Annual fee (Tuition Fee) structure for the candidate, admitted to the programmes, under different categories shall be as follows:

Programmes	General	NRI
MBBS	₹ 25,00,000	US \$ 40,000

- The Annual Fees (Tuition Fees) for **MBBS Programme** shall be increased by **7%** each year.
- Caution money** of ₹50,000/- at the time of admission (Interest Free and Refundable, after the completion of the MBBS Programme & deduction of all dues.)
- MBBS Programme Fee applicable for 5 years.

The Annual fee for the first year MBBS is to be paid by the student at the time of counseling and on-the-spot admission session by NEFT / RTGS / Demand Draft in favour of the **Dean, Dr. D. Y. Patil Medical College, Hospital and Research Centre, Pimpri, Pune** payable at Pune.

University Eligibility & Registration Fee (One-time Fee) ₹2,00,000/- payable for the First Year only, shall be paid by the student separately at the time of filling in the Eligibility Application, as University Eligibility & Registration Fee, which shall be paid by NEFT / RTGS / Demand Draft (DD) Drawn in favour of the "**Registrar, Dr. D. Y. Patil Vidyapeeth, Pimpri**", payable at Pune. (Note: The University Eligibility & Registration Fee is non refundable.)

University Examination Fee

In addition to the above fees the student shall pay the University Examination Fee as prescribed by the University from time to time. Other conditions and formalities shall be as per the Rules of the University.

Hostel Accommodation

Hostel with Mess facility is available & Hostel is compulsory for 5 years (Five Years).

Hostel Fee per student for 3-seater Non-AC is ₹215700/- for General category and US \$ 4355 + 200 INR for NRI (excluding mess fees).

An Amount of Rs. 75,000/- will be charged extra to avail mess facility. Mess is compulsory for first year M.B.B.S.

Documents Required :

Instructions to Candidates General Quota :

The candidates shall bring following documents with them at the time of Admission in Medical / Dental College.

1. NEET - UG - 2022 Confirmation page of online application.
2. NEET - UG - 2022 Admit Card of examination.
3. NEET - UG - 2022 Marks cum rank sheet / Rank letter from the website- www.ntaneet.nic.in
4. S.S.C. Board Certificate / Certificate of Domicile / Nationality / Valid Passport / Birth Certificate (Age proof)
5. Bonafide Certificate - A certificate from the Principal of the School.
6. Statement of Marks of 10th Standard (S.S.C.).
7. Statement of Marks of 12th Standard (H.S.C.).
8. Transfer Certificate from Institution in which the candidate had last studied.
9. Migration Certificate.
10. Certificate of Medical Fitness from Registered Medical Practitioner.
11. Gap Certificate Affidavit (If applicable)
12. Candidate Pan Card (Photo copy)
13. Parent / Guardian's Pan Card (Photo copy)
14. Caste Certificate (in case SC/ST/OBC candidate)
15. Caste Validity Certificate (wherever applicable)
16. Four Photographs Pass Port size
17. Attempt Certificate
18. D. D. of Total amount of Fees. (Tuition and Eligibility Fees)
19. Aadhar Card

NRI Candidate/NRI Sponsorship candidate/Foreign National candidate

All above Documents (Sr. No.: 01 to 18)

Certificate Required for Admission NRI Candidate

1. Candidate's parents resident certificate issued by the Embassy of the country complying the Income Tax rules
2. Candidate's passport / VISA / Resident VISA
3. Citizenship of the candidate
4. Income Tax documents required as per the Income Tax Act. 1961

Certificate Required for Admission NRI Sponsorship Candidate

1. Candidate's sponsorer's resident certificate issued by the Embassy of the country complying with the Income Tax rules
2. Candidate's sponsorer's passport / VISA / Resident VISA
3. Citizenship of the sponsorer
4. Pan / Tax documents of the sponsorer
5. Sponsorship affidavit (stating that sponsorer is ready to bear the expenses for the whole duration of study)
6. Relationship affidavit (Relation of Candidate with the sponsorer) Family Chart

Certificate Required for Admission Foreign Nationals

1. Valid Foreign passport
2. Valid Visa Requirement
3. Valid Residential permit in India
4. Equivalent Certificate from Association of Indian Universities

Rules for refund of Fees

As per the rules displayed on the website and as per the UGC/M.C.C guidelines

Disclaimer

The candidates seeking admission to a particular course in the Vidyapeeth is warned against possible cheating by unscrupulous person(s), who may promise and assure a seat by extracting large sums of money, from the parents/candidates. The college has not appointed any such agent(s). The college shall not, in any way be responsible for the misdeeds of such persons.

Ragging

As per the recent UGC Regulations, student along with his/her parent should file affidavits about the anti-ragging regulations of UGC. These affidavits need not be on stamp paper nor need to be registered. It has to be submitted by students on-line on the Website.

http://antiragging.in/site/affidavits_registration_form.aspx
(This link is also available on DPU website)

Court's Jurisdiction

Any legal dispute arising out of the admission procedure of the course and refund of fees of the Vidyapeeth shall be under Pimpri, Pune jurisdiction only.

Disputes

Difference of opinion and any dispute arising in the interpretation and implementation of the clauses in the brochure, if any, shall be referred to the Vice Chancellor of Dr. D. Y. Patil Vidyapeeth, Pune. His/her decision shall be final and binding on all the concerned.

Discipline & Conduct of the Student

1.1 Obligations of the Student

- 1.1.1 Conduct himself/herself properly
- 1.1.2 Maintain proper behavior.
- 1.1.3 Observe strict discipline both within the campus, hostel & outside of the Institution.
- 1.1.4 Ensure that no act of his / her consciously or unconsciously brings the Institution or any establishment or authority connected with it into disrespect.

1.2 Any act/s by the student which is contrary to the clause (1), shall constitute **misconduct and/or indiscipline**, which include any one or more of the acts jointly or severally, mentioned hereinafter;

- 1.2.1 Any act of the student which directly or indirectly causes or attempts to cause disturbance in the lawful functioning of the Institution.
- 1.2.2 The student who is repeatedly absent from the class, lectures, tutorials, practicals and other courses.
- 1.2.3 The student not abiding by the instructions of the Faculty members and not interacting with them with due respect.
- 1.2.4 Any student found misbehaving in the campus/class or behaving arrogantly, violently towards the faculty, staff or fellow student.

- 1.2.5 The Students who is not present for all the class tests, midterm tests, terminal and preliminary examinations.
- 1.2.6 Permitting or conniving with any person / parent / guardian, which is not authorized to occupy hostel room, residential quarter, or any other accommodation or any part thereof of the Institution.
- 1.2.7 Obstruction to any student or group of students in any legitimate activities, in classrooms / laboratories / field or places of social and cultural activities within the campus of the Institute.
- 1.2.8 Possessing or using any fire arms, lethal weapon, explosives, or dangerous substances in the premises of the Institution.
- 1.2.9 Indulging in any act which would cause embarrassment or annoyance to any student / authority / staff or any member of the staff.
- 1.2.10 Stealing or damaging any farm produce or any property belonging to the Institution, staff member or student.
- 1.2.11 Securing admission in the Institution, to any undergraduate or post graduate program or any other course by fabrication or suppression of facts or information.
- 1.2.12 If the student fails to complete the assignments regularly and has poor academic performance when assessed by the regular class teachers and internal assessment, he/she will not be allowed to appear for the Vidyapeeth examination.
- 1.2.13 If a student remains absent for lectures, practical or class test and examinations without prior permission of the Principal or the head of the departments, she/he will not be compensated for extra class.
- 1.2.14 Students should read the notices regularly on notice boards in the academic complex, library and the department notice boards and ERP also.
- 1.2.15 Damage of property of the college and its sister institutes like tampering with fixtures, fittings, equipments, instruments, furniture, books, periodicals, walls, windows panels, vehicles etc., will be viewed very seriously.
- 1.2.16 Recording of any electronic images in the form of photographs, audio or video recording of any person without the person's knowledge; when such recording is likely to cause injury, distress, or damage the reputation of such person; is prohibited in any part of the College and hostel premises. The storing, sharing or distributing of such unauthorized records by any means is also prohibited.
- 1.2.17 Use of mobile phones and head phones during college hours is prohibited.
- 1.2.18 As per the rules and regulations of the Dr. D.Y. Patil Vidyapeeth, Pimpri, Pune, 80% attendance in a subject for appearing in the examination is compulsory inclusive of attendance in non-lecture teaching i.e. seminars, group discussion, tutorials, demonstrations, practical's, hospital (tertiary, secondary, primary) posting and bedside clinics etc.

- 1.7.8 While going out of hostel the students should enter their name in the register & sign the same by mentioning proper reason.
- 1.7.9 To leave the hostel premises, permission of the Chief Warden is absolutely necessary. Students who want to stay overnight to visit their parents or guardians should approach the Chief Warden for permission. Permission will be granted only after obtaining written request from the parent/guardian duly signed by them, which will be duly entered in a register maintained in each block by the Warden.
- 1.7.10 All rooms, corridors, toilets etc. must be kept clean and any student who violates the rule shall be expelled from the hostel.
- 1.7.11 Hostel facility is provided with a view to help the student to pursue his/her studies in good environment and to facilitate/ promote his/her academic progress. A student who fails to keep up the congenial atmosphere and environment in the Hostel or to perform well and maintain academic progress shall not be allowed to use the hostel facility and shall vacate his/her room immediately on intimation from the Chief Warden/ Dean/Principal/Director of Faculties.

All students will be governed by the rules stated above and by those that will be framed from time to time during the academic year.

Failure on the part of the students to abide by the disciplinary rules will result in such punishment including expulsion from the College/Hostel as may be imposed by the Institution/Vidyapeeth/Head of the Institution.

The decision of the Institution/Vidyapeeth/Head of the Institution with regard to disciplinary cases shall be final and all the students shall abide by such decisions.

1.8 Powers of Competent Authority (Dean/Principal/Director at the Institute level)

The Competent authority may impose any one or more of the following punishment/s on the student found guilty of misconduct, indiscipline, in proportion thereof:

- 1.8.1 Warning/reprimand
- 1.8.2 Fine
- 1.8.3 Cancellation/withheld scholarship / award / prize / medal.

- 1.8.4 Expulsion from the Hostel.
- 1.8.5 Expulsion from the institution
- 1.8.6 Cancellation of the result of the student concerned in the examination of the Institution.
- 1.8.7 Temporary annulment from the Hostel/ Institution.
- 1.8.8 Rustication from the Institution.

1.9 Procedure for Inquiry

If the competent authority is satisfied that there is a prima facie case inflicting penalties, mentioned in clause No. 8, the authority shall make inquiry, in the following manner:

- 1.9.1 Due notice in writing shall be given to the student concerned about his alleged act of misconduct / indiscipline.
- 1.9.2 Student charged shall be required within 15 days of the notice to submit his/her written representation about such charge/s.
- 1.9.3 If the student fails to submit written representation within specified time limit, the inquiry may be held exparte.
- 1.9.4 If the student charged desired to see the relevant documents, such of the documents, as are being taken into consideration for the purpose of proving the charge/s, may at the discretion of the inquiry authority, be shown to the student.
- 1.9.5 The student charged shall be required to produce documents, if any in support of his defense. The inquiry authority may admit relevant evidence / documents.
- 1.9.6 Inquiry Authority shall record findings on each implication of misconduct or indiscipline, and the reason for such finding and submit the report along with proceedings to the competent Authority
- 1.9.7 The competent Authority on the basis of findings, shall pass such orders as it deems fit.

The procedure prescribed above need not be followed, when the student charged admits the charges in writing.

1.10 Appeal

If the punishment/fine/rustication is imposed on a student by Dean/Principal/ Director, such a student shall be entitled to file an appeal before the Vice- Chancellor within thirty (30) days of the receipt of the order.

- 1.2.19 The Students must present in proper dress code with apron/ lab coat, name badge and identity card on all week days /working days and during clinical duties.
- 1.2.20 Admission of the student will be cancelled at any point of time in case of;
 - 1.2.20.1 Not submitting the required documents on time.
 - 1.2.20.2 Failing to fulfill required eligibility criteria of the program.
 - 1.2.20.3 Submission of fake or incorrect documents.
 - 1.2.20.4 Admission gained by resorting to fraudulent means, illegal gratification or any unfair practice detected at any stage during the entire program.
 - 1.2.20.5 Not paying the stipulated fees on time.

1.3 Prohibition of Ragging:

- 1.3.1 Ragging in any form is strictly prohibited in the campus and outside. The UGC Regulations on “Curbing the Menace of Ragging in Higher Educational Institutions, 2009” (as amended) and the MCI (Prevention and Prohibiting Ragging in Medical Colleges/ Institutions) Regulations 2009, and DCI Regulations on Curbing the Menace of Ragging in Dental Colleges, 2009 shall be applicable to all students of the Vidyapeeth.
- 1.3.2 It is mandatory to fill the online Anti Ragging undertaking, by every student at the time of the admission and on commencement of every academic year.
- 1.3.3 Smoking or consumption of alcoholic beverages, or use of banned materials inside the College, Hostel and Campus is strictly prohibited.. Any violation on the part of the students will be viewed very seriously and they will be suspended from the college immediately pending enquiry and in the case of hostellers, they will be expelled from the hostels immediately. Such students will not be permitted to attend classes/sit for examinations and enter the campus without the written permission of the competent Authority.

1.4 Attendance & Progress:

Each student shall always maintain decency, decorum and good conduct, besides keeping steady progress and required attendance. The conduct/ academic performance/ attendance of each student shall be reviewed periodically and appropriate action, including detaining from appearing for the Vidyapeeth Exam/ expelling from the Hostel or College, as the case may be, will be taken against the erring student. The students shall abide by such decision of the authorities of the Institution/Vidyapeeth.

1.5 Payment of Tuition and other Fees

- 1.5.1 On admission of candidates to the first year of the course of study, all the notified fees viz., annual tuition fee, registration or eligibility fee, health insurance, caution deposit, hostel and mess fee, etc., as applicable, should be paid on or before the prescribed date without fail. Any delay will attract penalty as specified. If any candidate fails to remit

tuition fee and other fees within the last date as notified, he/she will forfeit his/her admission to the course concerned.

- 1.5.2 In respect of subsequent year(s) of study, tuition fee and other specified fees shall be paid on or before the date as notified to the parents/students and on the Notice Board of the Institution /College concerned. Late payment, if any, will attract penalty as specified.
- 1.5.3 Similarly, examination fee, as prescribed and notified from time to time, shall be paid on or before the due date. If there is any delay, student has to pay penalty as specified. If any student fails to remit the examination fee even after lapse of the period specified for payment with penalty, such student will not be issued Hall Ticket for the Vidyapeeth examination(s)/debarred from appearing in the Vidyapeeth examination(s).
- 1.5.4 All fees, once paid to the Vidyapeeth account, will not be refunded or adjusted for any other purpose under any circumstances.

1.6 Rules relating to Vidyapeeth examinations:

- 1.6.1 The candidates appearing for the Vidyapeeth theory examinations shall be under the direct disciplinary control of the Centre Incharge. Possession of cell phone or any electronic device or incriminatory materials by a candidate or found copying from any device in the examination hall, is strictly prohibited.
- 1.6.2 Disciplinary action will be initiated if any candidate indulges in any malpractice (unfair means) as enumerated in the Vidyapeeth Examination Manual.

1.7 Rules for Hostel Students

All inmates of the Hostel shall observe the following rules for the smooth and efficient running of the hostel and for their comfortable stay:-

- 1.7.1 Only bonafide students of Vidyapeeth are eligible for admission to the hostels.
- 1.7.2 Students who fail to remit the Hostel fee even after a reminder in writing, shall vacate the hostel room allotted to them, forthwith.
- 1.7.3 No posters or pictures should be stuck inside and outside the room or anywhere around the premises of the hostel or College. Hostlers should avoid sticking bills and posters on the windows, doors and walls (except name strips on the room door). In case the room is found not in order, fine will be levied on the erring student.
- 1.7.4 Inmates should switch off fans and lights before leaving their rooms.
- 1.7.5 The inmates are advised to close the taps after use in order to avoid wastage of water.
- 1.7.6 Dining services will be provided only in the mess and there will be no room service.
- 1.7.7 Whenever any hosteller falls sick the same should be reported by him/her to the warden who will provide all necessary assistance to get appropriate treatment or medicines.



GRADUATE ATTRIBUTES

- Clinician who understands and provides preventive, promotive, curative, palliative and holistic care.
- Problem-solver with analytical and critical thinking skills to diagnose and treat patients.
- Communicator with empathy and respect while interacting with patients, their families, colleagues and community.
- Researcher with ability to conduct original high-quality research to develop innovations for improved patient outcomes.
- Professional who practices ethics in research and demonstrates ethical behaviour with patients, community and profession.
- Leader and member of the health care team with capabilities to collect, analyze, synthesize and communicate health data appropriately.
- Recognizes and responds to community problems and needs for improving healthcare and health outcomes.
- Environmentally conscious practitioner who promotes environment conservation and sustainability practices.
- Lifelong learner committed to continuous professional development for improvement of skills and knowledge to achieve excellence in patient care, teaching and research.

● **MBBS PROGRAMME OUTCOMES** ●

No.	By the end of the programme, the MBBS Graduate will have / be:
PO 1	Knowledge and Skills
PO 2	Planning and problem-solving abilities
PO 3	Communication
PO 4	Research Aptitude
PO 5	Professionalism and Ethics
PO 6	Leadership
PO 7	Social Responsibilities
PO 8	Environment and Sustainability
PO 9	Lifelong Learner



ERP and Biometric System for students

Dr. D. Y. Patil Vidyapeeth and Dr. D. Y. Patil Medical College, Pune feel proud to announce that ERP and Biometric System are implemented. Details are as under: -

ERP System:

Login for following facilities:

- 1) View your time-table online.
- 2) Check your attendance.
- 3) Read notes uploaded by faculty.
- 4) View the notices and circulars.
- 5) Check the allotted mentor.
- 6) View your academic calendar.
- 7) Check your internal assessment evaluation pattern.
- 8) Submit online application regarding bonafide and other Certificates.
- 9) Browse the libraries of all Institutes under Dr. D. Y. Patil Vidyapeeth.
- 10) Students can give online feedback.

Biometric System:

1. Student's attendance is taken by Biometric System during the Lectures / Practicals / Dissections and Tutorial.
2. The absent report of yours will be sent through SMS at your registered mobile number in our office at the time of admission.
3. Classroom attendance will not be considered if the student is late in class or misbehaves.

FIRST PROFESSIONAL MBBS 2022-23

Proposed Academic Calender

	Date	Month	Working Days	Sundays	Festivals	Total
Course starts on	15/11/2022	November	14	2	0	16
		December	27	4	0	31
		January	25	5	1	31
I Internal Assessment Examination	20-02-2023 To 28-02-2023	February	23	4	1	28
PTM	17/03/2023	March	24	4	3	31
		April	21	5	4	30
		May	25	4	2	31
II Internal Assessment Examination	07-06-2023 To 16-06-2023	June	25	4	1	30
		July	25	5	1	31
		August	25	4	2	31
Last Date of Classes	14/09/2023	September	12	2	0	14
Preliminary Examination	15-09-2023 To 06-10-2023	September October				
Additional Examination / Revision Classes	16-10-2023 To 21-10-2023					
University Examination	03-11-2023 Onwards	November				
Total Days (Summary)			246	43	15	304

* As per NMCU.11026/02/2022-UGMEB dated 07/12/2022

Block Training Programme

Time	Particular	Monday	Tuesday	Wednesday	Thursday	Friday	Saturday	Saturday
							(1st, 3rd, & 5th)	(2nd & 4th)
08.30 am to 9.25 am	LECTURE	ANATOMY	PHYSIOLOGY	BIOCHEMISTRY	ANATOMY	ANATOMY	PHYSIOLOGY	BIOCHEMISTRY
09.25 am to 10.20 am	LECTURE	ANATOMY	PHYSIOLOGY	PHYSIOLOGY	ANATOMY	ANATOMY	BIOCHEMISTRY	ANATOMY
10.20 am to 11.15 am	LECTURE	PHYSIOLOGY	ANATOMY	Comm.Medi.	PHYSIOLOGY	BIOCHEMISTRY	ANATOMY	PHYSIOLOGY
11.15 am to 11.30 am	BREAK	BREAK	BREAK	BREAK	BREAK	BREAK	BREAK	BREAK
11.30 pm to 01.30 pm	DISSECTION	DISSECTION	DISSECTION	DISSECTION	DISSECTION	DISSECTION	DISSECTION	DISSECTION
01.30 pm to 2.30 pm	LUNCH	LUNCH	LUNCH	LUNCH	LUNCH	LUNCH	LUNCH	LUNCH
02.30 pm to 5.00 pm	PRACTICAL / LD Visit	PHYSIO, BIO, or Comm.Medi. Visit	PHYSIO, BIO, or Comm.Medi. Visit	PHYSIO, BIO, or Comm.Medi. Visit	PHYSIO, BIO, or Comm.Medi. Visit	PHYSIO, BIO, or Comm.Medi. Visit	PHYSIO, BIO, or Comm.Medi. Visit	PHYSIO, BIO, or Comm.Medi. Visit

MENTORSHIP PROGRAMME

Students admitted to the first year MBBS are from 10+2 stream and there is a structural difference between the school and college education. Therefore, for smooth integration, group of students are allotted to a faculty member who acts as their Mentor during the course. Regular counseling sessions are arranged for the students. Senior members of the faculty look after this activity. Every attempt is made to ensure that students feel confident and fully secure and the changeover is smooth.



Administrative and Academic Heads

No	Name	Designation	Contact No	Email ID
1	Dr. J. S. Bhawalkar	Dean	9766545431	dean.medical@dpu.edu.in
2	Dr. P. Vatsalawamy	Director Academics	9850116519	puranamv@gmail.com
3	Mrs. Annie Francis	Dy Registrar	9921103825	annie.francis@dpu.edu.in
4	Dr. Neelam Prasad	Professor & Student Section Incharge	9850556821	neelam.prasad@dpu.edu.in
5	Dr. Chhaya Saraf	HOD of Physiology	9752157596	med.phy@dpu.edu.in
6	Dr. Preeti Sonje	HOD of Anatomy	8975781889	med.ana@dpu.edu.in
7	Dr. Vaishali Dhat	HOD of Biochemistry	9922737501	med.biochem@dpu.edu.in
8	Mrs. S. A. Kakade	Clerk, Account Section	9175358990	accounts.medical@gmail.com
9	Mrs. D. V. Shinde	Assistant Registrar (Hostel Accounts)	9881431472	deepti.shinde@dpu.edu.in

UG Section mail Id :- ugsection.medical@dpu.edu.in

List of Holidays for the Year 2023

Sr. No.	Holiday	Day	Date
1	Republic Day	Thursday	26 th January, 2023
2	Mahashivratri	Saturday	18 th February, 2023
3	Dhulivandan (Holi 2nd Day)	Tuesday	7 th March, 2023
4	Gudi Padwa	Wednesday	22 nd March, 2023
5	Ram Navmi	Thursday	30 th March 2023
6	Mahaveer Jayanti	Tuesday	4 th April, 2023
7	Good Friday	Friday	7 th April, 2023
8	Dr. Babasaheb Ambedkar Jayanti	Friday	14 th April, 2023
9	Ramzan ID (Id-ul-Fitar)	Saturday	22 nd April, 2023
10	Maharashtra Din	Monday	1 st May, 2023
11	Buddha Pournima	Friday	5 th May, 2023
12	Bakri ID (ID-ul-Juha)	Wednesday	28 th June, 2023
13	Moharum	Saturday	29 th July, 2023
14	Independence Day	Tuesday	15 th August, 2023
15	Parsi New Year	Wednesday	16 th August, 2023
16	Ganesh Chaturthi	Tuesday	19 th September, 2023
17	Anant Chaturdashi / Id -E - Milad	Thursday	28 th September, 2023
18	Mahatma Gandhi Jayanti	Monday	2 nd October, 2023
19	Dasara	Tuesday	24 th October, 2023
20	Diwali (Laxmi Pujan)	Monday	13 th November, 2023
21	Diwali (Balipratipada)	Tuesday	14 th November, 2023
22	Diwali (Bhaubeej)	Wednesday	15 th November, 2023
23	Guru Nanak Jayanti	Monday	27 th November, 2023
24	Christmas	Monday	25 th December, 2023

Following Holidays fall on Sunday

1	Chhatrapati Shivaji Maharaj Jayanti	19 th February, 2023
2	Diwali (Narak Chaturdashi)	12 th November, 2023

दूरभाष/Phone : 25367033, 25367035, 25367036
फैक्स/Fax : 0091-11-25367024
ई-मेल/E-mail : ug@nmc.org.in,

पॉकेट -14, सेक्टर-8, द्वारका, फेस-1, नई दिल्ली-77
Pocket- 14, Sector- 8, Dwarka,
Phase – 1, New Delhi-77

राष्ट्रीय आयुर्विज्ञान आयोग
National Medical Commission
(Undergraduate Medical Education Board)

No. U.11026/02/2022-UGMEB/

Dated the 12th Oct 2022

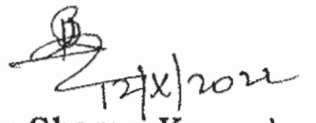
PUBLIC NOTICE

National Medical Commission hereby issues guidelines for 2022-23 batch of MBBS as follows:

1. *The academic calendar for 2022-'23 batch which shall commence on 15th November'22 as per **Annexure**.*
2. *It may please be noted that vacations and examination schedules may be arranged as per the affiliated universities of the respective colleges.*
3. *The other broad guidelines are as mentioned below :*
 - i. *Electives- 2 blocks of 15 days each to be adjusted by colleges for (a) pre/ paraclinical branches and (b) clinical branches.*
 - ii. *Supplementary Exams to be conducted with a gap of 1 month from the regular exams and results to be declared within 15 days.*
 - iii. *There shall be no supplementary batches.*
 - iv. *The remaining rules and regulations shall be as per GMER 1997.*
 - v. *Yoga, Family adoption program through village outreach shall continue as for 2021-'22 batch.*

4. This issues with the approval of the Chairman, National Medical Commission.

Encl : As above.


(Shambhu Sharan Kumar)
Director, UGMEB

ACADEMIC CALENDER FOR MBBS BATCH (2022-23)

Professional year	Time frame	Subjects	Months (Teaching + Exam +results)
1 st	15 th Nov.'22 to 15 th Dec '23	Anatomy, Physiology, Biochemistry	13 months
2 nd	16 Dec'23 to 15 th Jan'25	Pathology, Microbiology, Pharmacology	13 months
3 rd (III-part-1)	16 th Jan'25 to 30 th Nov'25	For.Med. & Toxicology and Community Medicine/ PSM	10.5 months
4 th (III-part-2)	Dec'25 to May,'27	Gen. Surgery, Gen. Med., Pediatrics, Ob.Gy, ENT, Ophth,	17.5 months
Internship	1 st Jun'27 - 31 st May,'28	As per CRMI 2021 Regulations	12 months
PG	1 st Jul, '28		



UNDERTAKING FOR OBSERVING CODE OF CONDUCT

I have read, clarified and understood the regulations mentioned in the prospectus and information available on the website of www.dpu.edu.in. I fully subscribe to the concerns, vision & mission of, and the processes at the institute. I shall abide by the rules & regulations of the institute and the Vidyapeeth.

I know that I have to take part in all other non-academic activities irrespective of my religious faith and beliefs. Having understood the importance of these, I promise that I shall do it to the best of my ability.

In solemn assurance and acceptance after clarification and explanation of the above, I hereby affix my signature jointly along with my parent / guardian understanding that this is my own code of conduct to have a fruitful and memorable association with the institute and the Dr. D. Y. Patil Vidyapeeth, Pune. I am aware of the consequences if I violate any of the rules of the institute. I will accept the decision of the institute in case of any indiscipline on my part including termination from institute.

Parent's/Guardian's Signature : _____ Candidate's Signature : _____

Parent's/Guardian's Name : _____ Candidate's Name : _____

Relation : _____

Date : _____

Place : _____



Robotic Surgery



Robotic Surgery



ICU



Special Room



Operation Theatres



Operation Theatres

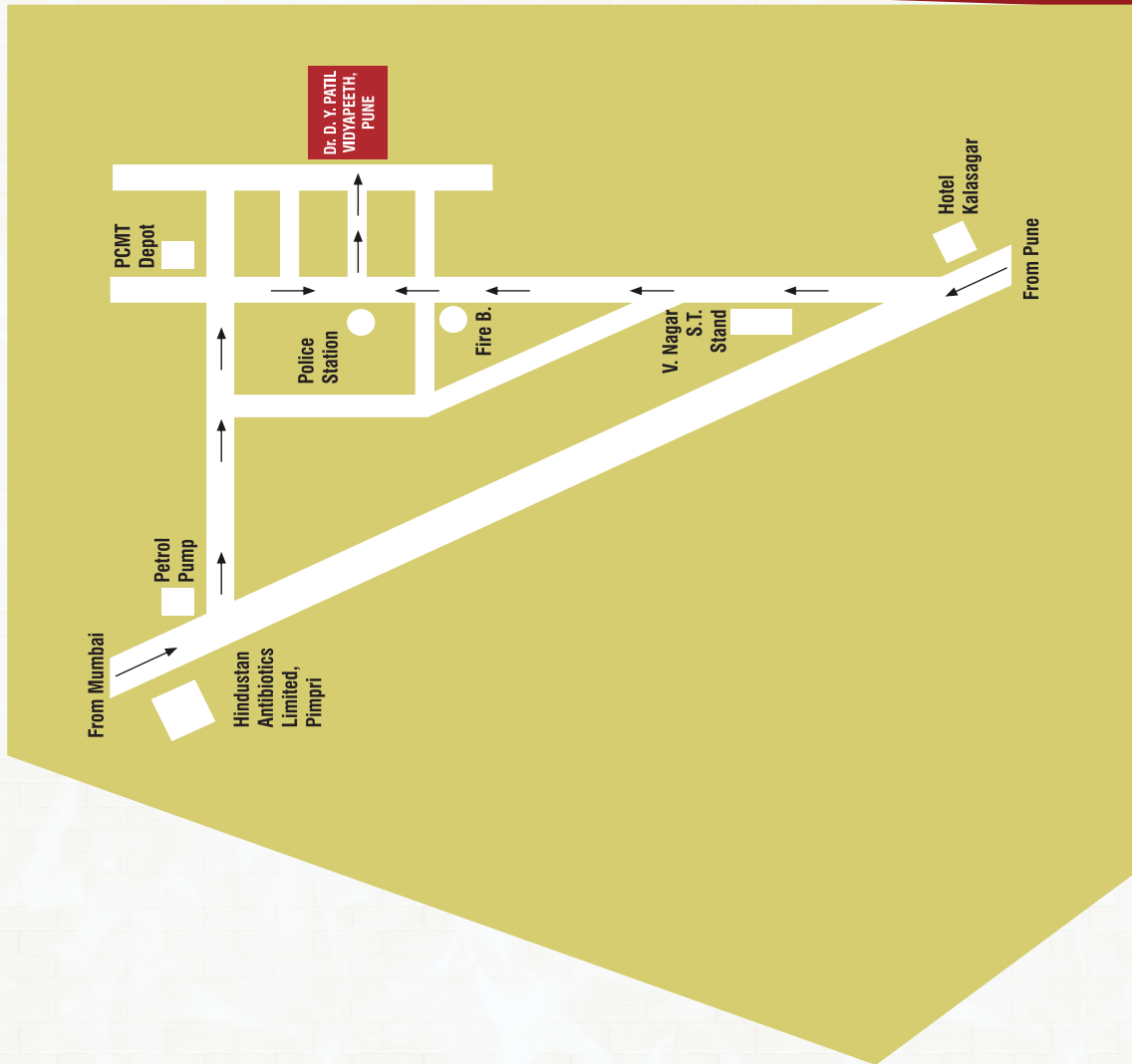


Learning Resource Centre or Central Library



Learning Resource Centre or Central Library

LOCATION MAP



DPU

Dr. D. Y. Patil Vidyapeeth, Pune

(Deemed to be University)

Sant Tukaram Nagar, Pimpri, Pune - 411 018, Maharashtra, India.

Tel. No. : (020) 27805000, 27805001. Fax (020) 27420010

E-mail : info@dpu.edu.in, www.dpu.edu.in

Dr. D. Y. Patil Medical College, Hospital & Research Centre

Sant Tukaram Nagar, Pimpri, Pune 411 018, Maharashtra, India.

Phone: 020 27805100 / 27805900

Email : info.medical@dpu.edu.in • Website : www.medical.dpu.edu.in